



# Linking Landscapes

## A WildCountry Vision for North-East Tasmania


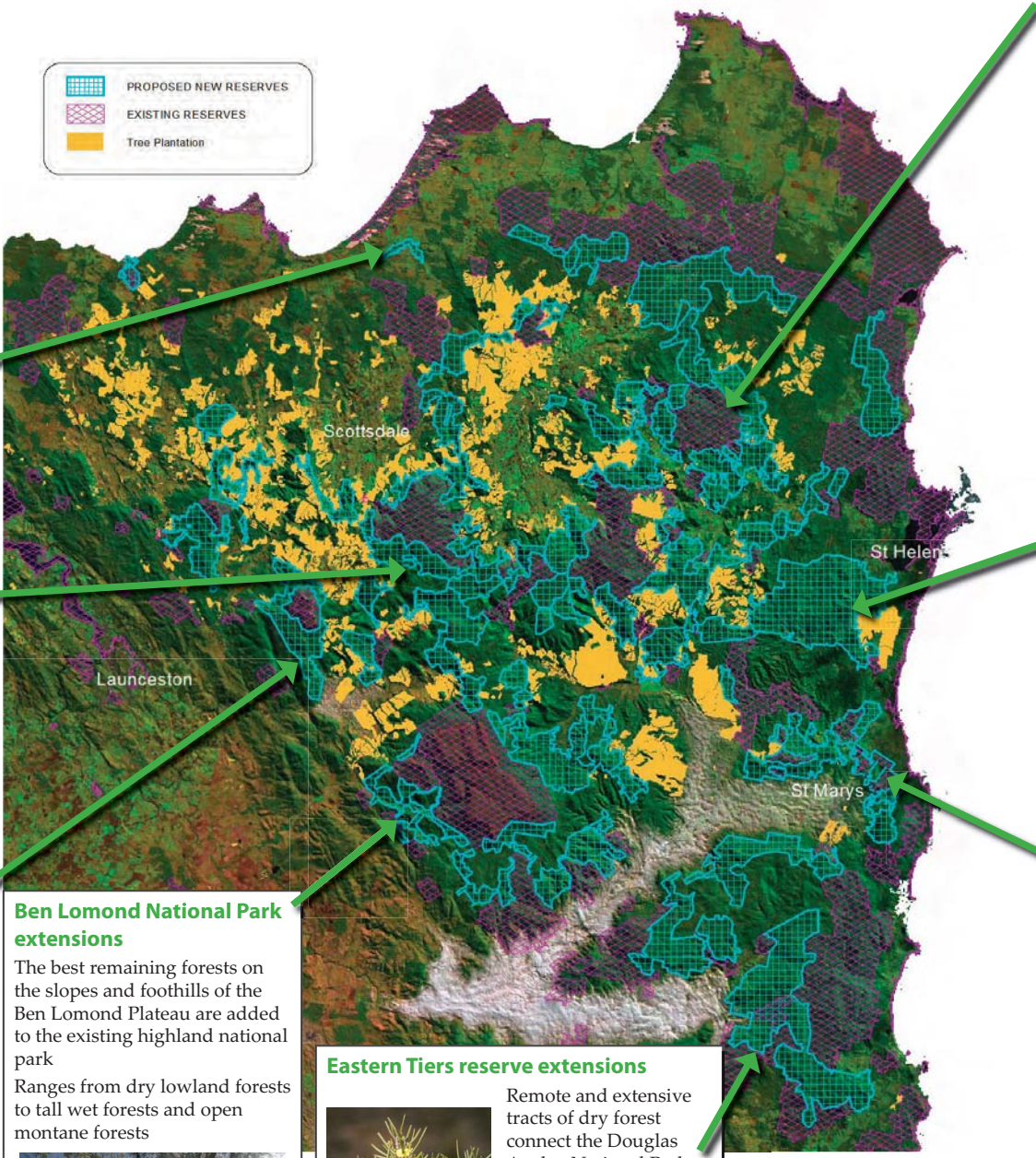
**McKerrow Marshes**  
 480 hectares of Crown Land  
 An important remnant of river flat vegetation on the Great Forester River  
 Most of the surrounding Great Northern Plain is privately owned and has been cleared for agriculture  
 This proposed reserve contains paperbark swamp forest (considered rare and endangered in Tasmania) and a regionally significant patch of blackwood swamp forest



**Mount Maurice Reserve extensions**  
 The existing Mt Maurice Forest Reserve protects some of the highland vegetation in the area but neglects old-growth forests on the lower and middle slopes  
 These proposed extensions will ensure protection of the most extensive tracts of rainforest and tea-tree forest in north east Tasmania in addition to some of the best remaining stands of tall mountain ash forest and rare highland grasslands




**Mount Barrow Protected Landscape**  
 Integrating the conservation commitment of landowners who have covenants on their land with protection of surrounding public land  
 Connects the Mt Barrow and Mt Barrow Falls reserves and protects an altitudinal sequence of vegetation (providing a representative sample of the local ecology and allowing for environmental responses to climate change)

**Ben Lomond National Park extensions**  
 The best remaining forests on the slopes and foothills of the Ben Lomond Plateau are added to the existing highland national park  
 Ranges from dry lowland forests to tall wet forests and open montane forests




**Eastern Tiers reserve extensions**  
 Remote and extensive tracts of dry forest connect the Douglas Apsley National Park with other existing reserves to create a large protected area in the largely unprotected Eastern Tiers  
 A hotspot for threatened plant species



**North East Highlands – a new national park**  
 By connecting several existing reserves a large area of spectacular and biodiverse mountains will be protected as a national park  
 This will be a major tourist drawcard for the north-east, offering scenic drives and bushwalks  
 The area includes extensive areas of undisturbed vegetation, important threatened species habitat and the headwaters of numerous water catchments



**Constable Creek – Loila Tier**  
 This relatively pristine area of dry forest and heathland is close to St Helens  
 Contains several rare and threatened vegetation types, old-growth dry forests and significant populations of threatened plant species



**St Marys Protected Landscape**  
 A varied landscape of dolerite peaks, limestone caves, wet and dry forests  
 Existing reserves on public and private land are connected and integrated into a landscape-scale protected area  
 Protecting and promoting the natural attractions of the St Marys region  
 Recognising the significant contribution to nature conservation by private landowners in the area  
 5870 hectares of proposed reserves in addition to 3670 hectares of existing reserves

